

产品规格书

PRODUCT SPECIFICATION

PRODUCT—产品: 12VDC高空微波感应带zhaga接口MODEL NO—型号: HD06VCRH 7BDATE——日期: 2021-12-06PREPARED—编制: 夏勇CHECKED—审核: 陈启东APPROVED—批准: 周豪

客户确认

CUSTOMER RECEIVED

CUSTOMER—客户: _____

CHECKED—审核: _____

APPROVED—批准: _____

DATE——日期: _____

产品版本变更记录表 Version history

版本Version	变更日期Change Date	变更内容Content	备注Remark
V1.0	2021/07/05	/	/
V2.0	2021/12/06	重新定义zhaga底座出线	对比表如下
V2.0	2021/12/06	Definition on Zhaga Receptacles Wires	Specification Table

	PIN脚 Function PIN	功能 Function	线色 Wire Color			PIN脚 Function PIN	功能 Function	线色 Wire Color
原底座功能脚 Wires & Function OLD Style	1	VCC	黄色 Yellow		更新底座功能脚 Wires & Function NEW Style	1	VCC	黑白色 Black/White
	2	GND/DIM-	灰色 Gray			2	GND/DIM-	粉色 Pink
	3	NC				3	DIM+	紫色 Purple
OLD Style	4	DIM+	紫色 Purple	NEW Style	4	NC	黄色 Yellow	



12VDC高空微波感应带zhaga接口 12VDC HIGHBAY MICROWAVE SENSOR WITH ZHAGA 18 RECEPTACLE

HD06VCRH 7B

- 微波感应, 最高15M安装高度 •Zhaga 18标准接口
- 三段式调光; 光感优先功能 •遥控设置

- Microwave Sensor for max 15M Height
- With Zhaga Book 18 Receptacle
- Bi-level Dimmable, Daylight Priority •Remote Control

On/Off Control
开/关功能

Detection Area
探测范围设置

Daylight Sensor
日光阈值设置

Warranty
5年质保

Stand-by period
守候时间设置

Stand-by dimming level
守候亮度设置

Hold Time
延时时间设置

10-15M Highbay
10-15m高安装

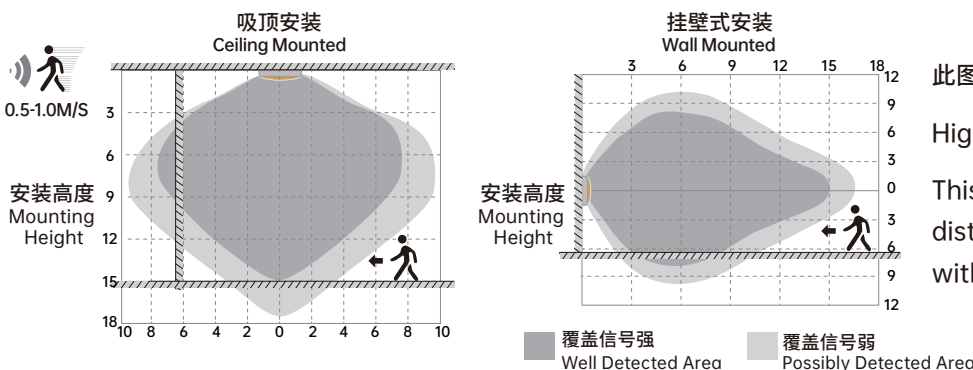
Remote Control
遥控设置

Technical Data 参数规格

工作电压 Operating Voltage 10.5-15V DC 供电电流不能<30mA 10.5-15V DC Current Required<30mA	探测范围设置 Detection Area 25%/50%/75%/100%	安装高度 Mounting Height Max.15m/49.21ft 吸顶安装 Max.15m/49.21ft Ceiling Mounted
控制方式 Control Method DIM 0-10V	延时时间设置 Holdtime 5s/30s/1min/3min/5min/10min/20min/30min	探测范围 Detection Range Max,ø16m/52.49ft 吸顶安装 Max,ø16m/52.49ft Ceiling Mounted
待机功耗 Standby Consumption <30mA 耗电流 <30mA Power Consumption	日光阈值设置 Daylight Threshold 2Lux/10Lux/30Lux/50Lux/80Lux/120Lux/Disable	运动检测速度 Motion Detection 0.5~1m/s
微波频率 Microwave Frequency 5.8GHz±75MHz	守候时间设置 Stand-by Period 0s/10s/30s/1min/5min/10min/30min/60min+∞	工作温度 Temperature -20°C~+60°C
微波功率 Microwave Power <0.3mW	守候亮度设置 Stand-by Dimming Level 10%/20%/30%/50%	IP等级 IP Rating IP65
光感优先功能 Daylight Priority Function 日光阈值设置为: 120Lux/80Lux/50Lux/30Lux 守候时间设置为: +∞ 守候亮度设置为: 10%/20%/30% Daylight priority function works when daylight threshold per set as 20Lux/80Lux/50Lux/30Lux, standby period as +∞ and standby dimming level as 10%/20%/30%		质保 Warranty 5年

出厂默认设置: 探测范围100%, 延时时间5s, 日光阈值“Disable” /守候时间0s/守候亮度10%。可按客户要求更改出厂设置
Factory Default Setting: Detection area 100%/ Hold time 5s/ Daylight threshold Disable/Stand-by period 0s/ Stand-by dimming level 10%. Can be customized default programming.

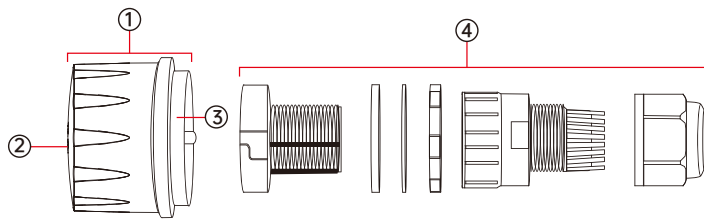
Detection Patterns 探测范围图



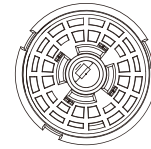
此图表示探测范围为100%时检测距离的参考图。

Highest mounting height is 15m

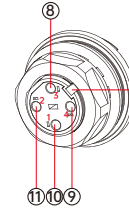
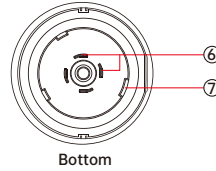
This figure indicates the maximum distance at the highest mounting height with 100% sensitivity.



- ① Module 微波模组
- ② Top View 微波探测面
- ③ Bottom 下盖组件
- ④ Receptacle 插座组件
- ⑤ Mount A A卡口
- ⑥ Metal Pins 金属脚座
- ⑦ Mount A A卡口
- ⑧ 0/1-10V DIM+
- ⑨ NC
- ⑩ 12VDC input
- ⑪ GND/DIM -



⑤ The space for biggest pin, check it before spiraling.
旋转安装时, 大的卡口对应安装, 这里均标示为卡口A

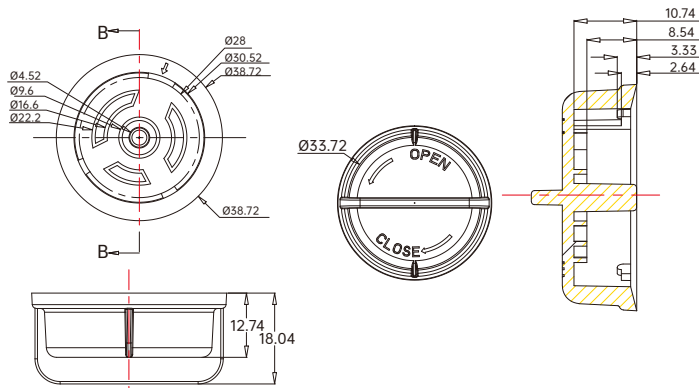


Function of metal pins are: DIM+ VCC GND/DIM -
按此开口, 插脚顺序按顺时针方向走

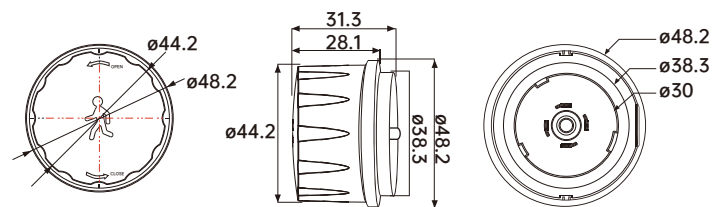
Mechanical structure 尺寸图

Unit:mm

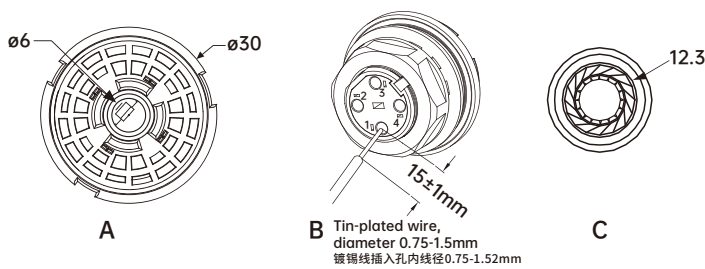
Cap 密封帽 尺寸



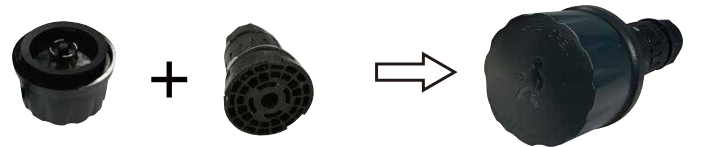
Module 微波模组 尺寸



Receptacle 插座组件 尺寸



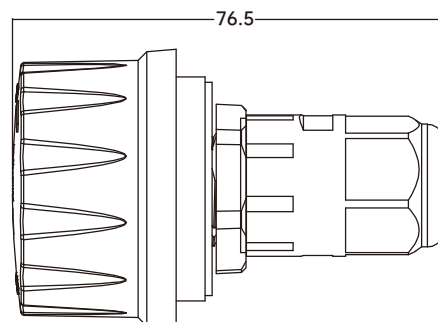
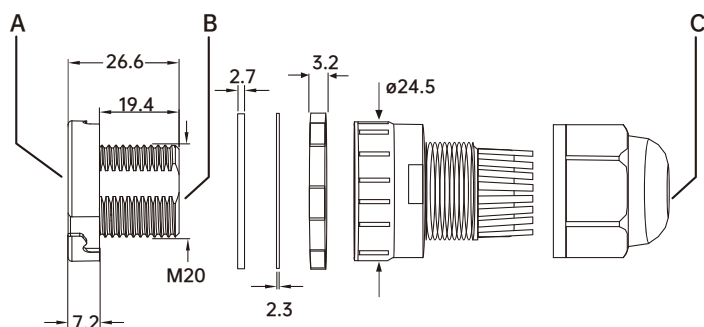
Components 产品组件

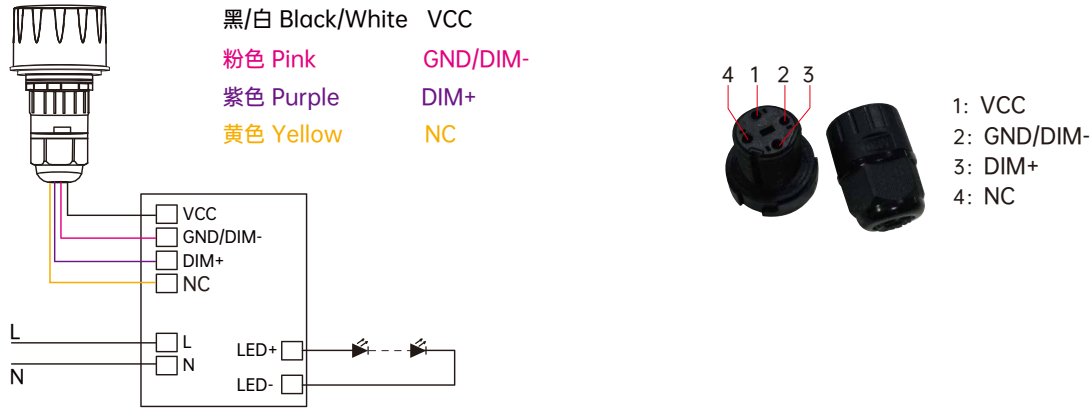


Group 1. Receptacle with the functional module.
底座+功能微波模组, 得到一个完整功能感应产品。



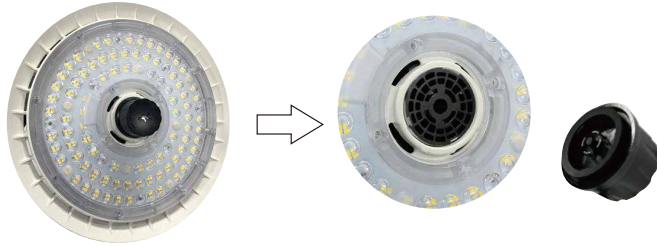
Group 2. Receptacle with the cap, no function.
底座+空上盖



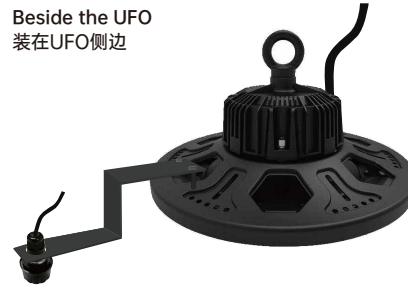


Installation 安装图

Inside the UFO
内置于UFO灯具中



Beside the UFO
装在UFO侧边



Pin to Mount
底座开口对好后旋转即完成安装



光感优先功能 Daylight Priority

光感优先功能:

产品采用双 PD 自动区分自然光和人造灯光, 当环境自然光亮度小于设定值时灯自动亮起, 环境光大于设定值时灯自动熄灭。

Dusk/Dawn sensor:

Dual-PD technology brings a fully automatic dusk/dawn sensor which can tell the difference between natural light and LED light, to ensure the light will be off when needed.

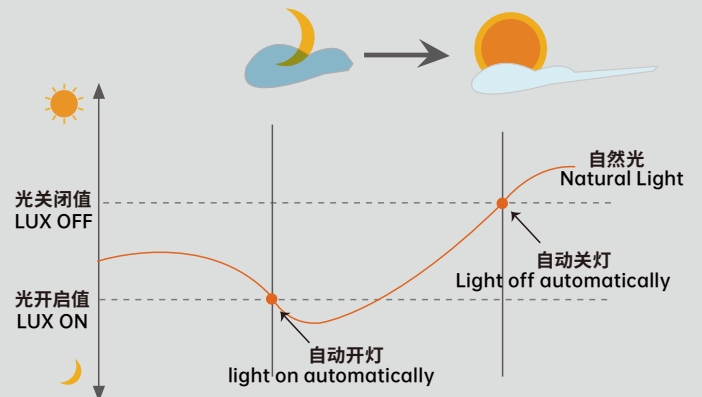
With Daylight priority function, HD06VCRH 7B is able to differentiate artificial light brightness from natural light after installed inside the fixture, and automatically turn off light when ambient brightness exceeds preset lux level.

此款产品是采用光感优先功能, 它可以自动检测环境光, 当外界亮度低于预设值时, 灯开启; 外界环境亮度超过预设值 (不需要灯光) 时, 灯关闭。

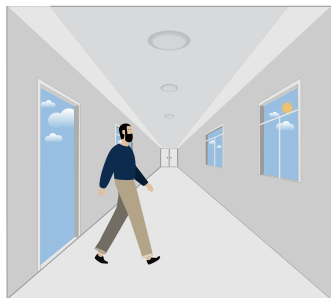
Precondition of Daylight priority:

光感优先功能要满足以下条件:

- | | |
|--|---|
| 1. Standby period is $+\infty$; | 1. 守候时间为 $+\infty$; |
| 2. Standby dimming level is on 10%, 20% or 30%; | 2. 守候亮度为 10%, 20%、30%; |
| 3. Daylight threshold is on 30Lux, 50Lux, 80Lux, 120Lux or 120Lux. | 3. 日光阈值为 30Lux, 50Lux, 80Lux or 120Lux。 |

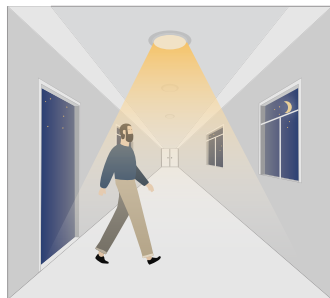


1. Automatically ON/OFF function 自动开/关功能



环境光亮度充足时，即使检测到运动，感应器也不亮灯。

With sufficient daylight, even when motion detected, light remains OFF.



当环境光亮度不足时，检测到运动后，感应器自动亮灯。

With insufficient daylight, the sensor turns light ON when motion gets detected.



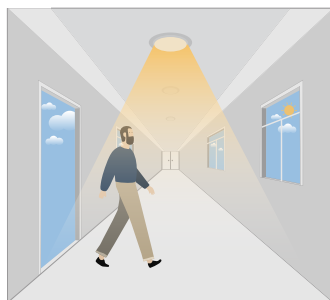
感应器检测不到运动后，自动进入延时时间，延时时间后自动关灯。

The sensor turns OFF light automatically after the holdtime when there's no motion detected.

2. Daylight Disable 光感不受控功能

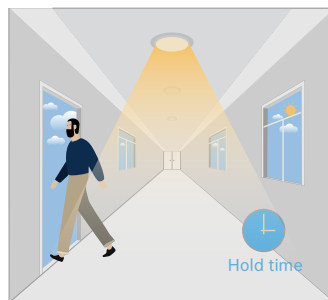
当自然光阈值设定为disable时，即完全不考虑自然光亮度，感应器检测到运动即亮灯。

When daylight threshold is preset as "disable", the sensor turns light ON when motion gets detected, and OFF after hold-time.



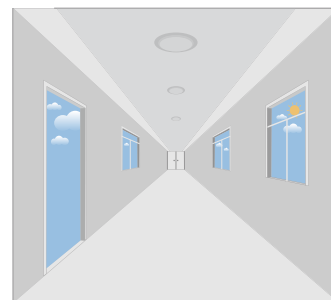
检测到运动后，感应器自动亮灯。

The sensor turns light ON when motion gets detected.



感应器检测不到运动后，自动进入延时时间。

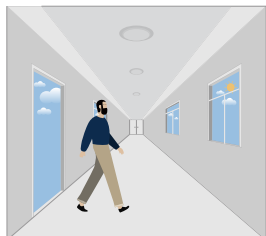
The sensor keeps light ON for holdtime period after motion leaves.



延时时间后自动关灯。

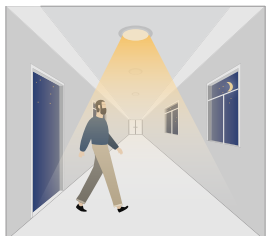
The sensor turns OFF light automatically after the holdtime.

3. Corridor Function, Bi-level Dimmable 三段式调光功能



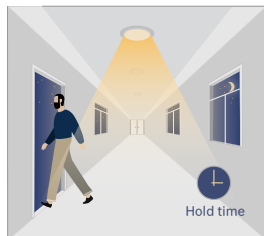
环境光亮度充足时，即使检测到运动，感应器也不亮灯。

With sufficient daylight, the sensor keeps light OFF even motion gets detected.



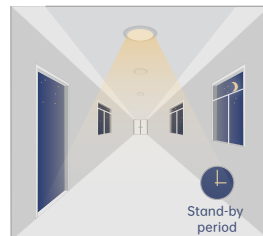
当环境光亮度不足时，检测到运动后，感应器自动亮灯。

With insufficient daylight, the sensor turns light ON when motion gets detected.



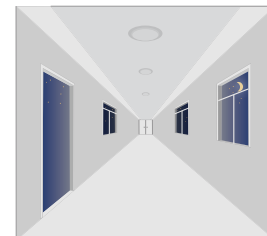
感应器检测不到运动后，自动进入延时时间；延时时间段内灯亮100%。

After there's no motion detected, the sensor keeps light ON 100% for holdtime.



延时时间后，感应器自动进入守候时间，保持守候亮度。

After holdtime, sensor dims light to standby dimming level for standby period.



守候时间结束后，感应器自动灭灯。

The sensor turns OFF light automatically after the standby period when there's no motion detected.



Attention 注意事项

1. Please read the instructions carefully before using this product and keep it well for all users to read at any time.
2. The sensor should be installed by qualified electrician and ensure power is off before the installation.
3. We reserve the right to modify any incorrect text, image and necessary technical parameters.
4. Any unauthorized modification is forbidden, otherwise all guarantees will be immediately invalid.

- 1、使用本产品前请仔细阅读使用说明，并妥善保管以便所有使用者随时参阅。
- 2、感应器应由专业的电工安装，并确保在安装前，切断电源。
- 3、我们将保留对任何错误文字或图像以及必要的技术参数做出修改的权利。
- 4、未经授权不得擅自修改感应器，否则一切签约保证将立即失效。

Installation precautions 安装注意事项

1. Microwave sensor can be installed in any lamp except the one with full metal shell.
2. The detected surface cannot be shielded by metal objects.
3. Make sure the microwave module is completely exposed outside.
4. The detection surface of the sensor module shall be installed facing the detection area.
5. Should be kept away from the driver to avoid interference generation and lamp flashing.
6. Wiring must be strictly in accordance with the wiring diagram to avoid short circuit.

- 1、除全金属壳灯具外，微波感应器可内置安装在其它任意灯具内。
- 2、微波感应面不能有金属物体遮挡。
- 3、开孔安装时，确保微波模块应完全裸露在外，否则会导致灯常亮或不灭。
- 4、感应模组探测面应面对检测区安装，否则会导致无感应或灯常亮。
- 5、应与驱动保持距离，否则会产生干扰，导致灯闪。
- 6、须严格按照接线图接线，否则会导致感应器短路。

Application Environment 应用环境

1. Suitable for indoor installation to avoid false triggering due to external factors such as rain, wind or tree swing.
2. Shall not be installed in the place with all four metal shelters and small space (such as galvanized-iron roof).
3. Shall note be mounted installation, so as to avoid false trigger caused by the lamp itself shaking.
4. Shall not be installed next to large operating machines such as ventilator/ceiling fan to avoid false triggering caused by machine vibration.

- 1.适用于室内安装，以免外界因素如下雨、刮风或树木摆动而误触发微波感应器。
- 2.避免安装在四面都有金属遮挡物，且空间狭小的地方（如铁皮房），以免造成灯常亮等自激现象。
- 3.避免悬挂式安装，以免灯具自身摇晃引起的误触发。
- 4.避免安装在大型运作的机器旁（如抽风机/吊扇），以免机器震动引起误触发。

User Notes 用户须知

1. Microwave can penetrate walls or glass thinner than $<20\text{mm}$ and attenuate if thicker than $<20\text{mm}$.
2. The driver voltage shall be stable and float within 10%.
3. Detection area will be affected by speed of motion, mounting height and movement volume.
4. Conduct test on sunny days without the lampshade which will affect the tested lux value.

- 1.除金属外，微波可穿透墙壁或玻璃（ $<20\text{mm}$ ），但会有衰减。
- 2.驱动电压需稳定，不能超出或低于工作电压 $\pm 10\%$
- 3.微波感应器会受安装环境、灯具、测试人员身形和速度的影响，探测范围会有所差异。
- 4.测试所得的 Lux 值会受灯具安装方式和灯罩材料的影响，建议在没有灯罩的晴天进行测试。

SCREEN DISPLAY,
MEMORY & APPLY FUNCTION,
OPTIONAL SCENES

独家LCD屏显
支持设置记忆与一键发送
配合调光功能感应器

Model: HD05R



Briefing of Button Functions 按钮功能简介

Buttons 遥控按键	Function 按键功能	Performance 按键介绍
	ON/OFF 开/关按键功能	Turn ON or OFF the sensor. 1. 开 / 关亮长灭模式; 2. 关闭微波感应模式
	MW/PIR	Exchange from Microwave detection to PIR detection, for future use. 模式切换
	Reset 复位功能	Press it to start detection programming; before pressing any other buttons, the screen shows default programming (Detection Area 100%, Holdtime 5S, Daylight Disable, Standby Dimming 10%, Standby Period 0S) 切换功能模式 感应模式默认值为探测范围 100%, 延时 5S, 守候 10% 亮度, 守候时间 0s, 光感不受控。
	Start 开始设置	Press it before you try to memorize program into the remote; After pressing it, S on the screen will blink and keeping blinking while making the program. 按下 Start 键, 显示屏左下角有 S 字母闪烁即可开始通过下面功能设置, 选定自己想要的功能参数
	Memory 存储/保存	Press it after programming, the blinking S will become a solid M, that means the program has been well memorized. 设置好自定义功能参数后, 需按下 Memory 键进行存储, 才能成功存储自定义功能参数值于遥控器内;
	Apply 一键发送	Press it to deliver the preset program to the specific sensors; every press will make the whole screen blink gently. 其它的感应器要使用已存储好的自定义场景设置时, 在红外接收范围
	Detection area 探测范围设置	Also known as "sensitivity", 100% means the highest sensitivity and longest distance. Press it, specific icon on the screen will blink and press the + - buttons to adjust. 功能模式下按下此键显示屏上相应灵敏度栏图标闪烁, 此时可通过中间的加减键选择灵敏度参数。
	Hold time 延迟时间设置	The period that light will stay illuminated 100% after no motion's detected; Press it, specific icon on the screen will blink and press the + - buttons to adjust. 功能模式下按下此键显示屏上相应延时栏图标闪烁, 此时可通过中间的加减键选择延时时间参数。
	Daylight Threshold 日光阈值设置	The preset lux level to compare with ambient brightness when motion gets detected; Press it, specific icon on the screen will blink and press the + - buttons to adjust. 功能模式下按下此键显示屏上相应光感阈值栏图标闪烁, 此时可通过中间的加减键选择光感阈值参数。
	Stand-by period 守候时间设置	The period after holdtime, during which the light keeps standby dimming level; Press it, specific icon on the screen will blink and press the + - buttons to adjust. 功能模式下按下此键显示屏上相应守候时间栏图标闪烁, 此时可通过中间的加减键选择守候时间参数。
	Stand-by dimming level 守候亮度设置	After holdtime, the light will dim from 100% to optional standby dimming levels; Press it, specific icon on the screen will blink and press the + - buttons to adjust. 与守候时间结合使用; 功能模式下按下此键显示屏上相应守候亮度栏图标闪烁, 此时可通过中
	UP 向上翻/或递加	The main functional buttons to adjust the factors to wanted level. 这两个按键是选择键, 按功能按键后, 再按 +/- 键选择参数。
	DOWN 向下翻/或递减	
	POWER 输出功率设置	Supports to manually change dimming output in detection mode; Press it, specific icon on the screen will blink and press the + - buttons to adjust. 功能模式下按下此键显示屏左中位置出现 PW 闪烁, 此时可通过中间加减键设置灯的输出功率
	Test mode 测试模式键	Supports to check if the sensor works correctly with a short 2S holdtime; Press it and the holdtime will change to 2S, and it can't be memorized. 按下此键为感应模式测试模式键, 断电后不此参数设定。 灵敏度 100%, 延时 2S, 守候亮度 10%, 守候时间 0S, 光感不受控

How to Use HD05R

1. SENSOR PROGRAMMING

1. ON/OFF button to turn on the light
2. SCENE button to start programming
3. Choose functional button of detection area, see icon blinking on the LCD screen display then use + - buttons to change
4. Same programming with all the other functional buttons of holdtime ,standby dimming level, standby period and daylight threshold
5. Done and leave the remote.

*Icon keeps blinking on the screen for 5S that means the program will then be kept after 5S.

*Each press will make sensor dim down light then back to 100%, it means remote signal has been well received.

2. MEMORY AND APPLY

@the 1st sensor

1. ON/OFF button to turn on the light
2. SCENE button to start programming
3. START button
4. Choose functional button of detection area, see icon blinking on the LCD screen display then use + - buttons to change
5. Same programming with all the other functional buttons of holdtime ,standby dimming level, standby period and daylight threshold
6. MEMORY button

7. APPLY button

@the other sensors

1. ON/OFF button to turn on the light
2. SCENE button to start programming
3. APPLY button

3. MANULLY DIMMING

ON/OFF mode

1. ON/OFF button to turn on the light
2. Press +- button to dim light directly, it dims from 10% to 100%

DIMMING mode

1. ON/OFF button to turn on the light
2. SCENE button to start programming
3. POWER button
4. +- buttons to dim light, but it only dims from 60% to 100%; 50% is one of the standby dimming level options

* Number on LCD screen display may keep changing 10%-100%.

HD05R 遥控使用步骤

1、微波感应设置

- 1.首先按 Scene 键复位,切换到感应模式;
- 2.开始对探测范围 [A] / 延时时间 [B] / 日光感应 [C] / 守候亮度 [D] / 守候时间 [E] 设置参数,按 [F] / [G] 键选择参数,设置时显示屏上对应的图标会闪烁,闪烁时间长是 5s, 5s 后自动保存设置值,同时,每遥控一次灯会眨眼睛模式一次,表示遥控信号接收成功并生效。
- 3.遥控设置完成。

2、自定义存储设置和应用 Start / Memory / Apply

- 1.首先按 Scene 键复位,切换到感应模式;
- 2.开始对探测范围 [A] / 延时时间 [B] / 日光感应 [C] / 守候亮度 [D] / 守候时间 [E] 设置参数,选择功能键后以 [F] / [G] 键选择参数,设置时显示屏上对应的图标会闪烁,闪烁时间长是 5s, 5s 后就会自动退出该模式。
- 3.设置完成后,按 Memory 键保存
- 4.其它的感应器要应用已存储好的自定义场景模式时,按 Apply 键即可应用已存储好的自定义场景模式,同时灯也会眨眼睛模式,表示遥控信号接收成功并生效。

3、灯亮度设置 (即输出功率设置) :

- 1.灯亮度设置时有两种情况,感应模式状态和常亮模式状态时。
- 2.在常亮模式状态下,按遥控 [F] / [G] 键设置,调节范围 10% -100%。
- 3.感应模式下状态下:
 - *要先按遥控中的 Scene 键,再按 POWER 键,再按 [F] / [G] 键设置灯的亮度,调节范围 60% -100%;
 - *注意的是遥控上的数值可以调 10% -100%,实际灯亮度调至 60%后亮度不再变暗。